



Start from Kobe. Innovate in Kobe.

KOBE Biomedical Innovation Cluster

Business Launch Guide



The City of Kobe launched the Kobe Biomedical Innovation Cluster (KBIC) as a recovery project to rebuild the economy of Kobe, which was severely damaged by the Great Hanshin-Awaji Earthquake that occurred on January 17, 1995. Since 1998, the City of Kobe has been endeavoring to develop an R&D hub for advanced bio-medical technology on Port Island, an artificial island, and through collaboration with industries, universities and medical institutions. To date, it has grown to become Japan's largest biomedical cluster with a concentration of cutting-edge research institutes, highly specialized hospitals, bio-medical and healthcare-related companies and universities.

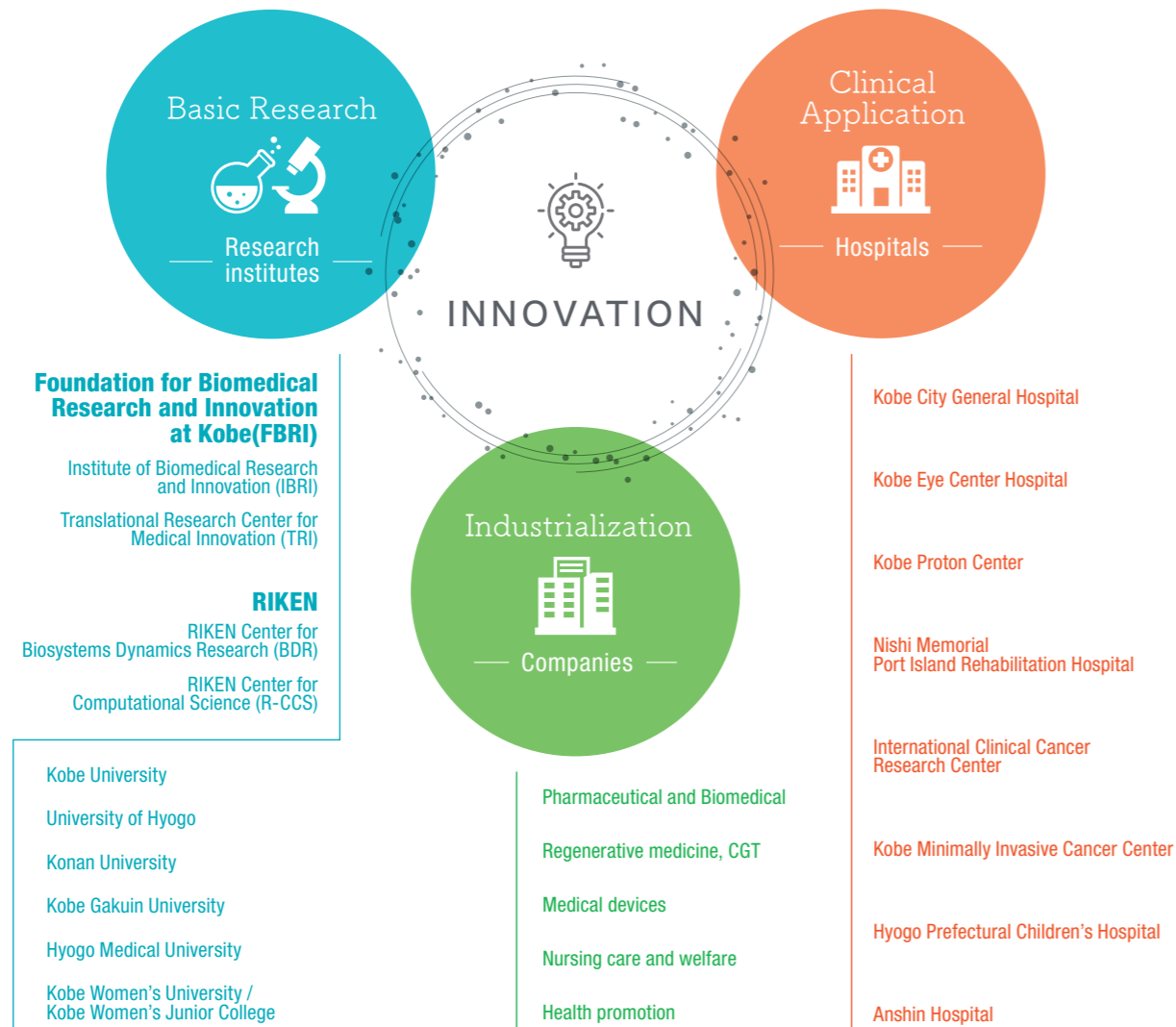
Cluster that creates Innovation

A concentration of 370 companies and organizations

- Research institutes, hospitals, and companies concentrated in a compact area; collaboration among them creates innovation
- A concentration of CROs, CMOs, and animal breeding and experimentation facilities responding to a variety of research and development needs
- The Translational Research Informatics Center (TRI) supports clinical research; the medical cluster with eight highly specialized hospital offers an excellent environment for clinical research

Total support system

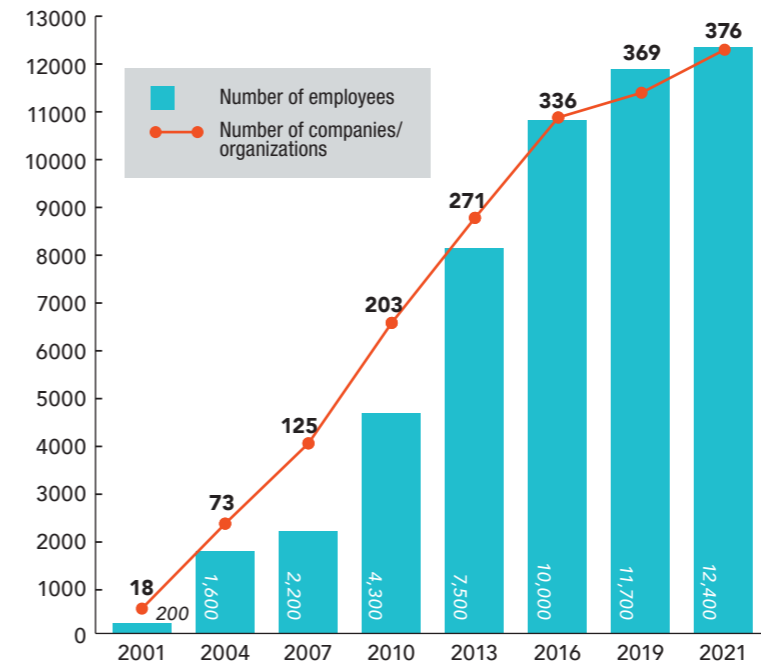
- Extensive support services for startups including a variety of incubation facilities and acceleration programs
- Kobe City staff, together with dedicated coordinators, provide support for commercialization, business expansion and matchmaking
- Strategic consultation on pharmaceutical affairs by PMDA is available



Companies and Organizations

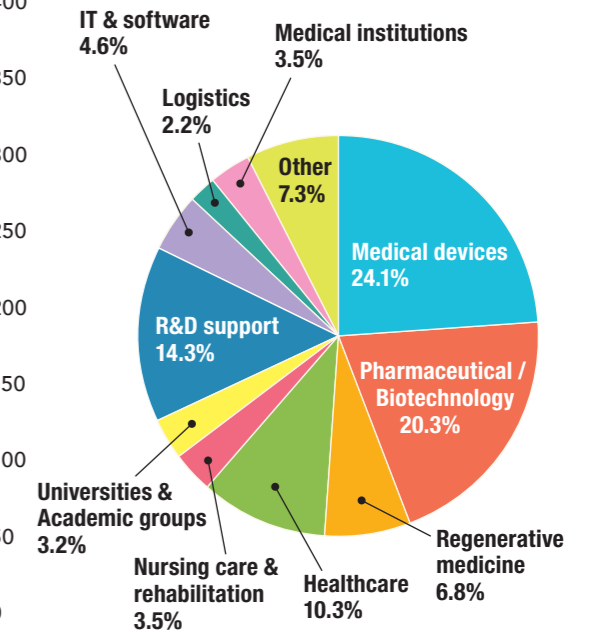


Employees



Breakdown of companies/organizations

As of end of Feb. 2024



Foreign affiliated companies

United States	Nihon Medi-Physics, Johnson & Johnson, Progenicyte Japan, Simco Japan, IQVIA Services Japan, Integra Japan, NEI Japan, VectorBuilder Japan
Germany	Nippon Boehringer Ingelheim, Bayer Yakuin, Dürr Dental Japan, provitro AG
France	TreeFrog Therapeutics Japan, Tecxell Japan
China	BGI Japan, International Cooperation for Medical Innovation, Hondo Innovation Center, Bioer LifeScience Japan, O and R
Belgium	IBP Technologies
Spain	Igenomix Japan
Switzerland	Skanjapan, Electrosuisse Japan, Sucampo Pharma
Italy	Copan Japan
United Kingdom	Spectris, IMI Critical Engineering Japan
Singapore	Access-2-Healthcare Japan
Korea	Dexcowin Japan, Celltrion



Foundation for Biomedical Research and Innovation at Kobe (FBRI)

Aiming to form Asia's leading cluster, the foundation plays a key role in promoting collaboration among industries, universities and medical institutions for biomedical and life science innovation.

Organizations

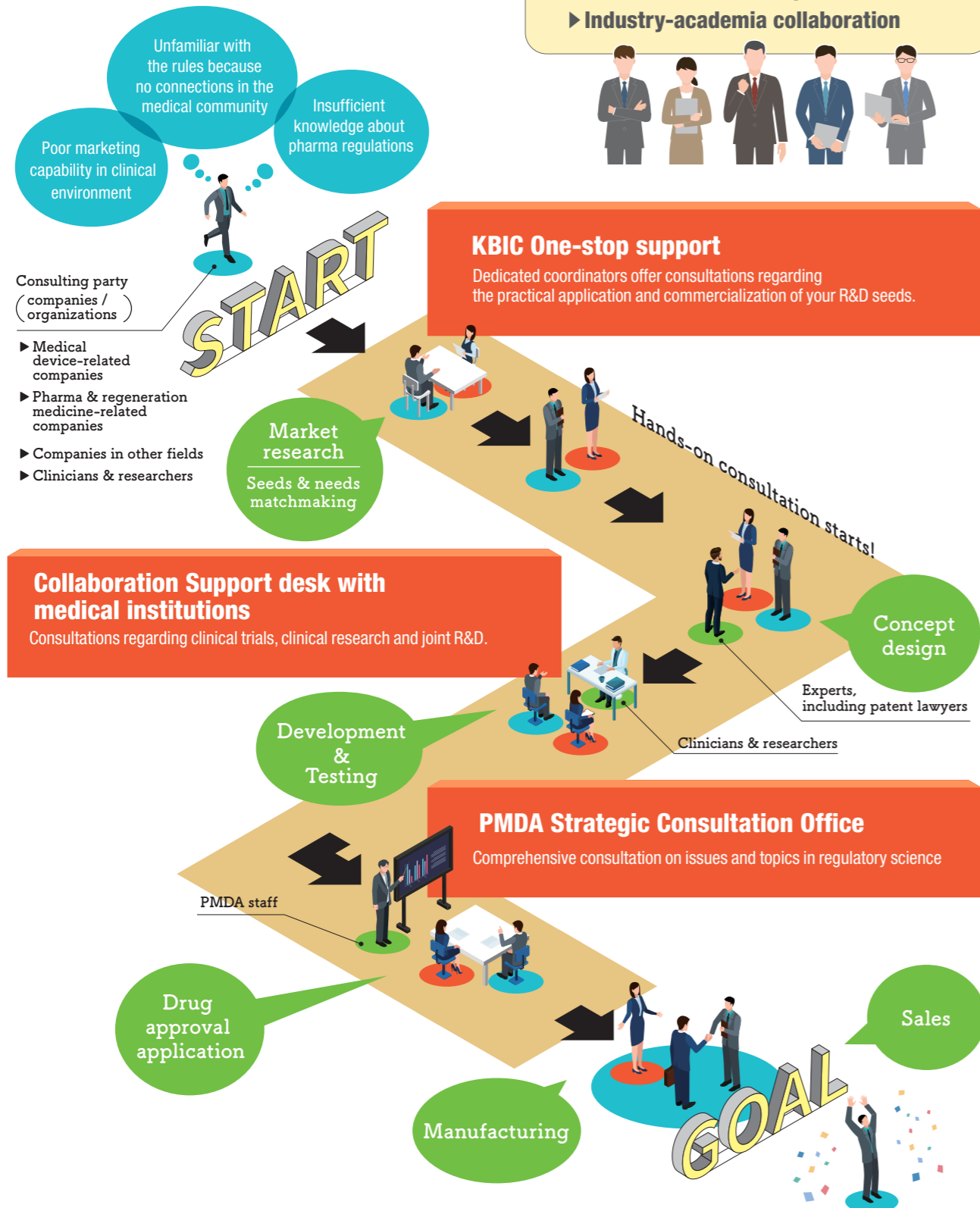
<p>Institute of Biomedical Research and Innovation (IBRI)</p> <p>R&D of novel medical technologies with a focus on immunology aging and regenerative medicine</p>	<p>Translational Research Center for Medical Innovation (TRI)</p> <p>Support for the clinical development in Japan and overseas.</p>	<p>Center for Cluster Development and Coordination (CCD)</p> <p>Providing one-stop services to meet a wide range of support needs including business matchmaking, professional consultation and network building.</p>
--	---	--

Comprehensive support from the idea stage to commercialization

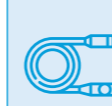


One-stop support

A dedicated coordinator serves as a guide to provide comprehensive support for the market research, R&D, pharmaceutical affairs, and developing sales channels



Superb Business Environment in KBIC



Platform to Promote Medical Device Commercialization

- Consultation for device development
- Business seminars etc.

58 products commercialized



Research Hospital Kobe University International Clinical Cancer Research Center (ICCRC)

A venue for joint research between medical professionals and companies/researchers to develop new medical devices.



Nursing-care technology development and implementation support

Support for the development of new products by companies working in the field of nursing care. Consultation service to facilitate the introduction of nursing care robots, ICT equipment and other technological innovations at nursing care facilities in Kobe.



Kobe Health Lab

- Advices on development and improvement of products for health promotion
- Matchmaking between companies and researchers
- Pool of city residents supporting R&D

2,920
resident supporters
(As of end of Feb. 2024)



Kobe Research Complex Program

The aim is to create a healthcare ecosystem in Kobe by gathering healthcare seeds and needs from across the country with a focus on the "Health Function" and "Data HUB" projects, and supporting commercialization through collaboration among industry, university, government and financial sectors.



Industrial Use of the Supercomputer (Fugaku, FOCUS)

Computer simulation facilitating large-scale, high-accuracy analysis and advancement of biomedical technology.



Business Support for Startups

Extensive support in the early stage

Seed

Early

Expansion

Later

People

- Hands-on support by coordinators
- Network building
Collaboration with companies and organizations in KBIC

Lab

- Incubation Lab (CLIK)
Shared equipment including Real-time PCR, all-in-one fluorescence microscope, chemiluminescence and fluorescent imaging equipment and automatic cell counters available.
- Co.Lab Kobe(KIBC)
Incubation labs operated by Bayer

Money

- Kobe Life Science Gap Fund
- Funding support
Connection with VCs and financial institutions

KANSAI Life Science Accelerator Program(KLSAP)

Networking and Business support



Expanding Business Network

We support business matchmaking through field-specific study sessions and networking events where researchers and companies share information on their activities

Cluster Networking Events / OPEN INNOVATION café

Provides opportunities for business card/information exchanges among companies/research institutes including those from other industries

48 member companies (as of Feb.2024)

Regenerative Medicine Study Group

Promotes the commercialization of regenerative medicine by providing the latest information in this field networking opportunities among members

22 member companies (as of Feb.2024)

Drug Discovery Forum

Promotes understanding about drug discovery-related technologies with hope of the development of new drugs in Kobe

Medical Environment Innovation Program

Promotes the development of novel medical devices in Kobe by matching corporate seeds with clinical needs



OPEN INNOVATION café



Regenerative Medicine Study Group



Joint Participation in Domestic and International Exhibitions

Opportunities to develop and expand sales channels

Regenerative Medicine and Pharmaceutical Biotechnology

- PharmaLab Expo
- Bio Japan
- Bio International

Medical Devices

- MedtecJapan
- MEDICAL FAIR ASIA/THAILAND



MEDICAL FAIR THAILAND



Subsidies and Grants

Office and Lab Rent Subsidy

3-year rent subsidy up to 50%
(Maximum ¥1,500 /m², ¥2 million/ year)
* Not applicable for large companies



Support for Foreign and Foreign-affiliated Companies with global activities

- | | |
|-------------------------|--|
| Kobe City | <ul style="list-style-type: none"> • 3-year (5-year if renting 1,500m²+) rent subsidy up to 25% (Maximum ¥1,500/m², ¥10million/ year) • Subsidy of up to ¥1.2 million /employee (Maximum ¥100 million) *Requirement of 5+ regular employees |
| Hyogo Prefecture | <ul style="list-style-type: none"> • 3-year rent subsidy up to 25% (Maximum ¥750/m², ¥1million/year, ¥10million if renting 1,500m² + with 10 + new fulltime employees) • Subsidy of up to 50% of market research expenses, etc. (Maximum ¥1 million) • Subsidy of up to 50% of corporate registration expenses, etc. (Maximum ¥200,000) • Employment subsidy of up to ¥600,000/person (Maximum ¥300 million) *Employment requirements apply. • 50% reduction in corporate enterprise tax (for 5 years) |

Shared laboratory / shared office rent subsidy

- Subsidies of up to 50% for desk/bench rent for 2 years (Maximum ¥1 million /year)
- *Applicable to Startup Creative Lab and Co.Lab Kobe

Subsidy up to 5 years in combination with regular rent subsidy

Startup Subsidy

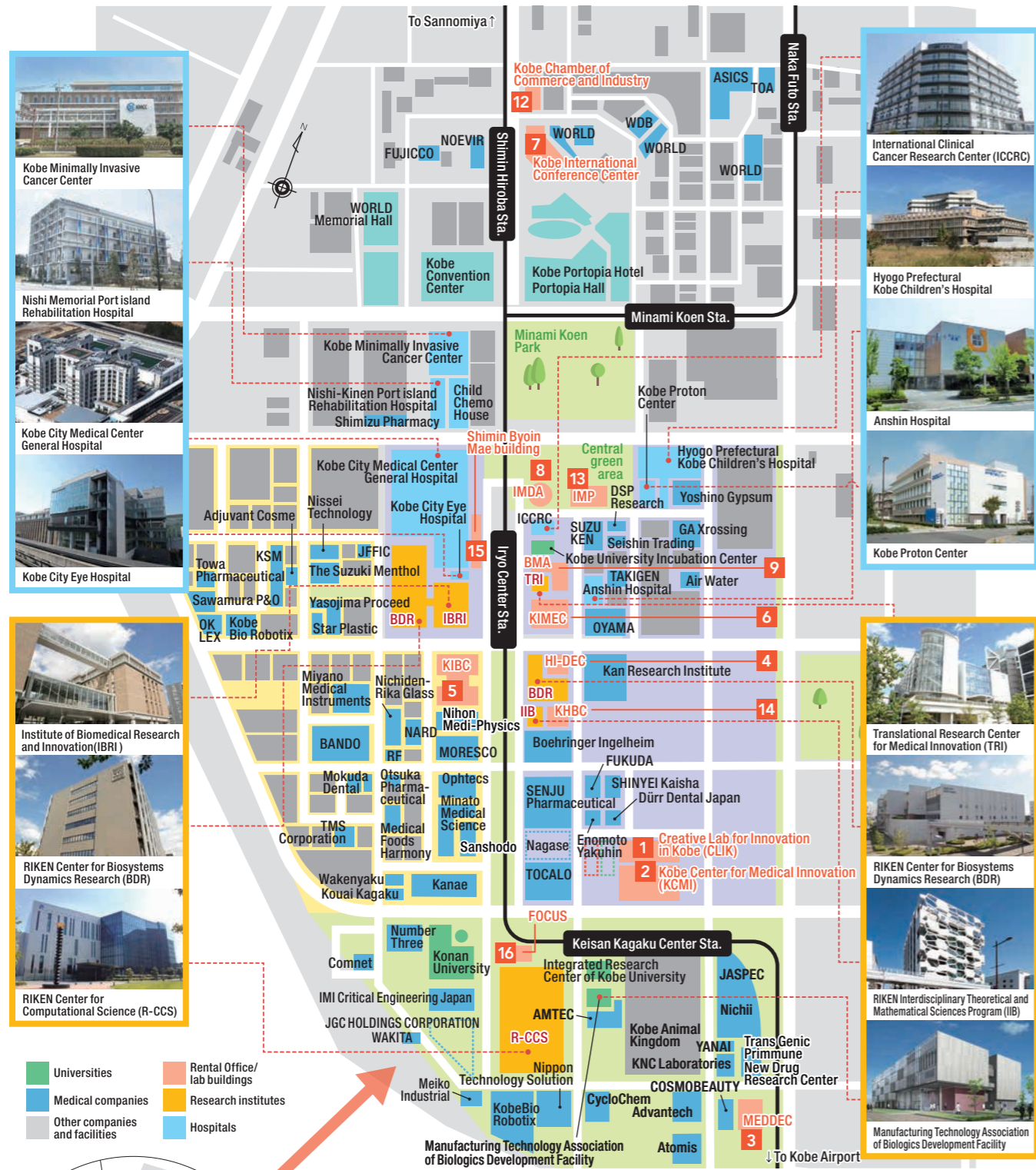
- Applicable for Startups to establish a new office in the city outside KBIC
- 3-year subsidy up to ¥10 million for office rent, office maintenance expenses, telecommunication fees, and HR costs

Building Acquisition Subsidy (as of April. 2024)

- Choice of
- Up to 4% of building acquisition costs (Maximum 20% of tax levied in the pertinent year)
 - Employment subsidy (¥300,000/ person) (Maximum 20% of tax levied in the pertinent year)
 - * Hiring 5 + (1+for SMEs) fulltime employees required

R&D Grants

Applicable for research contributing to the growth of the KOBE Biomedical Innovation Cluster



	Industrial facility site	Manufacturing factory site	Cultural / research facility site
Main business	Research institute / Head office / Service office	Factory	Research institute or factories / universities with research institute
Area of category	Commercial area	Industrial area or semi-industrial area (proper site for factories)	Semi-industrial area
Building to land ratio	80%	60%	60%
Floor area ratio	400%	200%	200%
Minimum area for sales / lease	1,000m ²	900m ²	2,000m ² (100m ² for some areas)

*The chart colors correspond to the colored areas above.

Please contact us for more information

Facility Use : **O**=Office **L**=Lab **M**=Shared equipment **S**=Small Office **P**=Parking available **R**=Meeting rooms available

1 Creative Lab for Innovation in Kobe (CLIK)

2F Startup Creative Lab (Shared Lab)



L M P R

Animal experiment facilities

2 Kobe Center for Medical Innovation (KCMi)

Wet lab available for CPC installation



L P R

3 Kobe Medical Device Development Center (MEDDEC)



L M P R

Operation rooms
Animal experiment facilities

4 Kobe Healthcare Industry Development Center (HI-DEC)



L R

5 Kobe International Business Center (KIBC)

Co.Lab Kobe (Incubation lab)



O L S P R

6 Kobe KIMEC Center Building (KIMEC)



O L P R

7 Kobe International Conference Center



O P

8 International Medical Device Alliance (IMDA)



O S P R

9 Business Support Center for Biomedical Research Activities (BMA)



L M P R

Animal experiment facilities

10 Port Island Building



O S P

11 Kita Futo Building



O P

12 The Kobe Chamber of Commerce and Industry



O P R

13 International Medical Plaza (IMP)



O L M R

Shared equipment
Operation rooms

14 Kobe Hybrid Business Center (KHBC)



L O P R

Shared Office

15 Shimin Byoin Mae Building



O L P R

16 Computational Science Research Support Center (FOCUS)



O R

Rental Offices & Labs



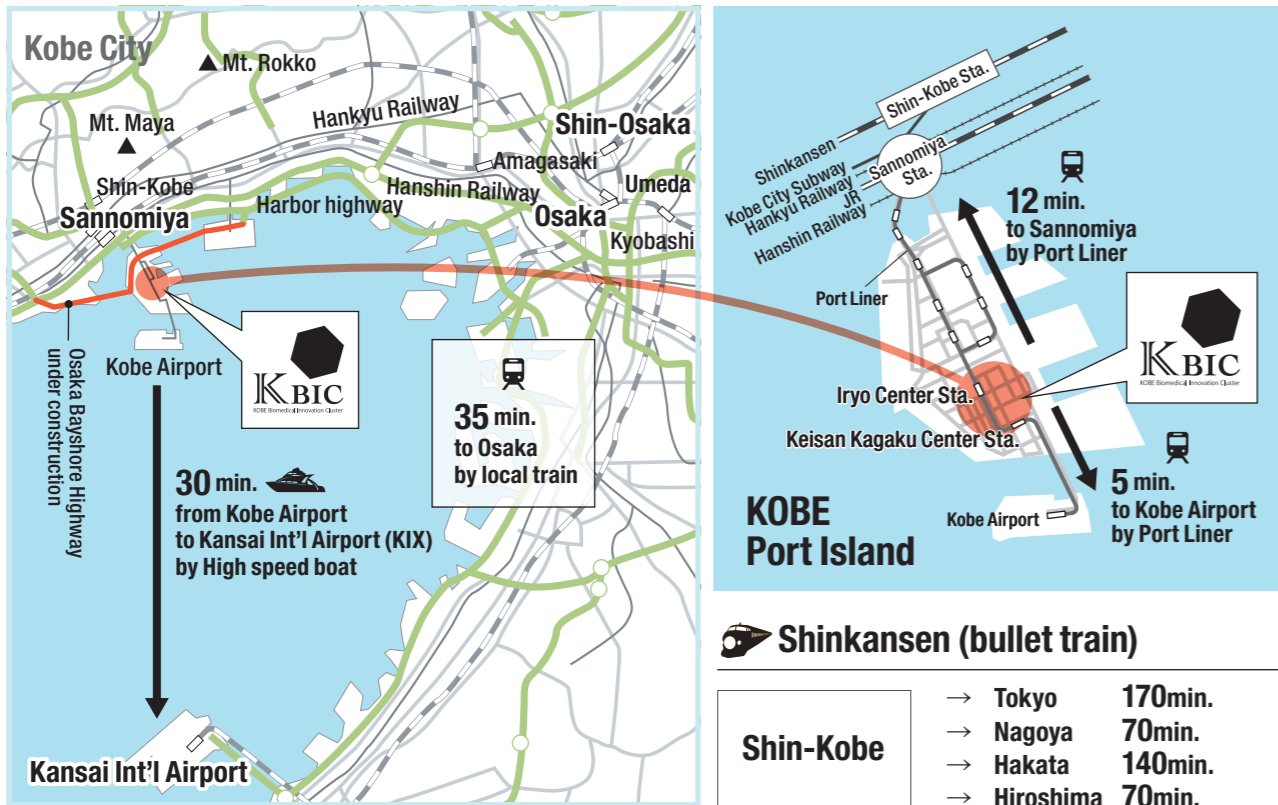
Land for business site





Excellent location to connect nationwide and globally

70 minutes to Tokyo-Haneda Airport from KBIC, and only 12 minutes to downtown Sannomiya

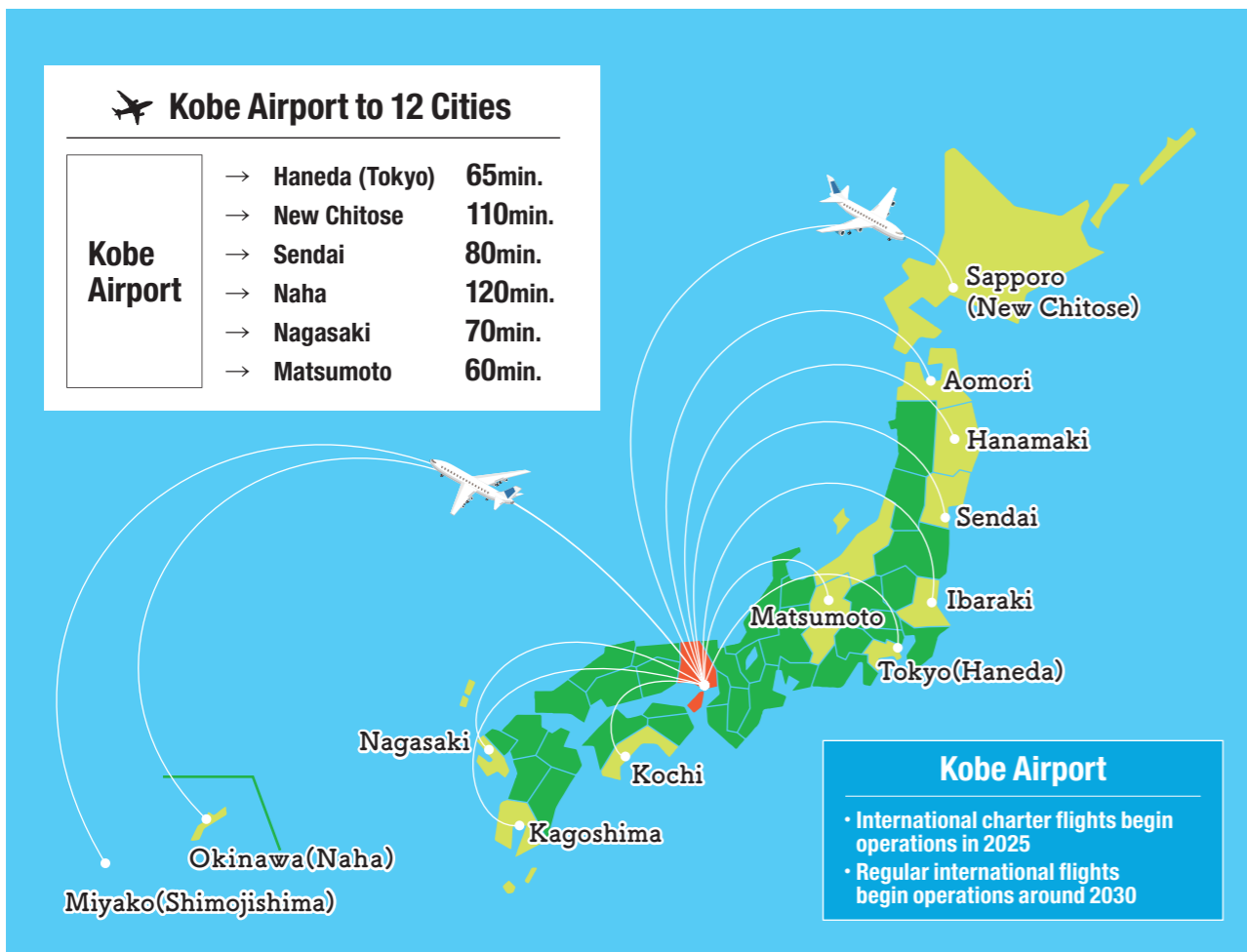


Living in Kobe

Kobe offers both the convenience of a city and the richness of nature. In this unique environment you can enjoy both work and life to the fullest



© KOBE TOURISM BUREAU



<p>Emergency Medical Center Kobe City General Hospital</p> <p>Ranked 1st nationwide for 9 consecutive years</p> <p>by Ministry of Health, Labour and Welfare 2022</p>	<p>The City you wish to live in</p> <p>Ranked 2nd nationwide.</p> <p>Brand Research Institute and Regional Brand Survey 2020</p>	<p>Residents satisfied with Kobes childrearing environment</p> <p>94.6%</p> <p>2021 Kobe survey</p>	<p>Number of Universities/ Jr. Colleges</p> <p>Ranked 3rd among major cities nationwide</p> <p>Ministry of Education, Culture, Sports, Science and Technology, School Basic Survey for 2020</p>
---	--	--	---

Contact :

Kobe Biomedical Innovation Cluster Department

6-5-1, Kano-cho, Chuo-ku, Kobe 650-8570 JAPAN

TEL : +81-78-322-6341

MAIL: kbic-contact@office.city.kobe.lg.jp

KOBE 
CITY of DESIGN

The latest information is available on our website!

**KBIC's
official website**



**Scan here to subscribe to our
E-newsletter(Japanese only)**

